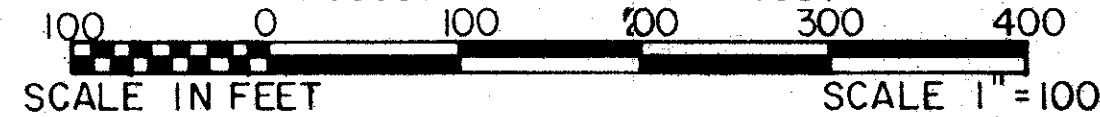


FALLS COUNTRY CLUB

BEING A REPLAT OF PART OF BLOCKS 38 AND 39 OF PALM BEACH FARMS COMPANY PLAT NO. 3
 RECORDED IN PLAT BOOK 2, PAGES 45 THRU 54 INCLUSIVE

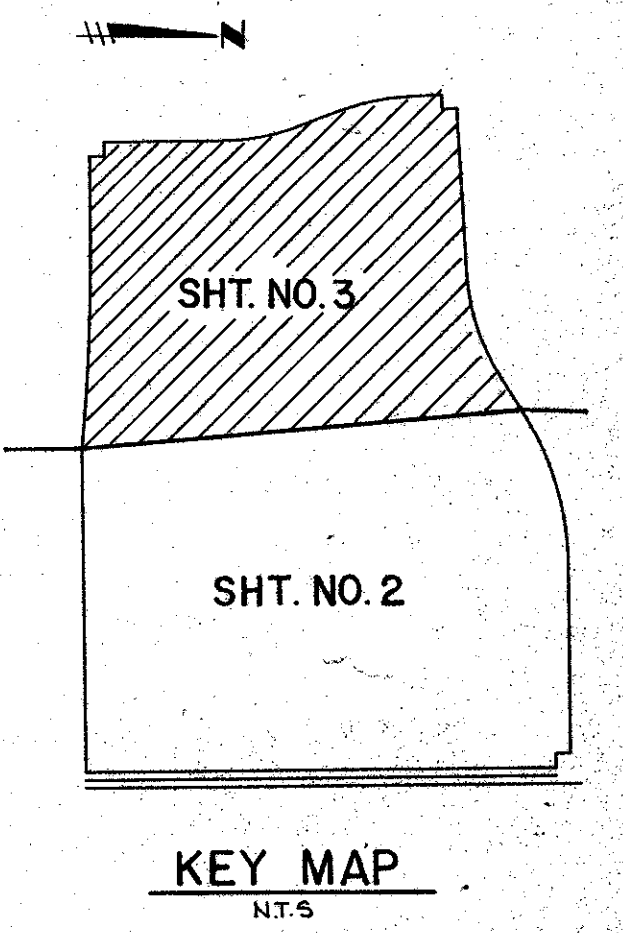
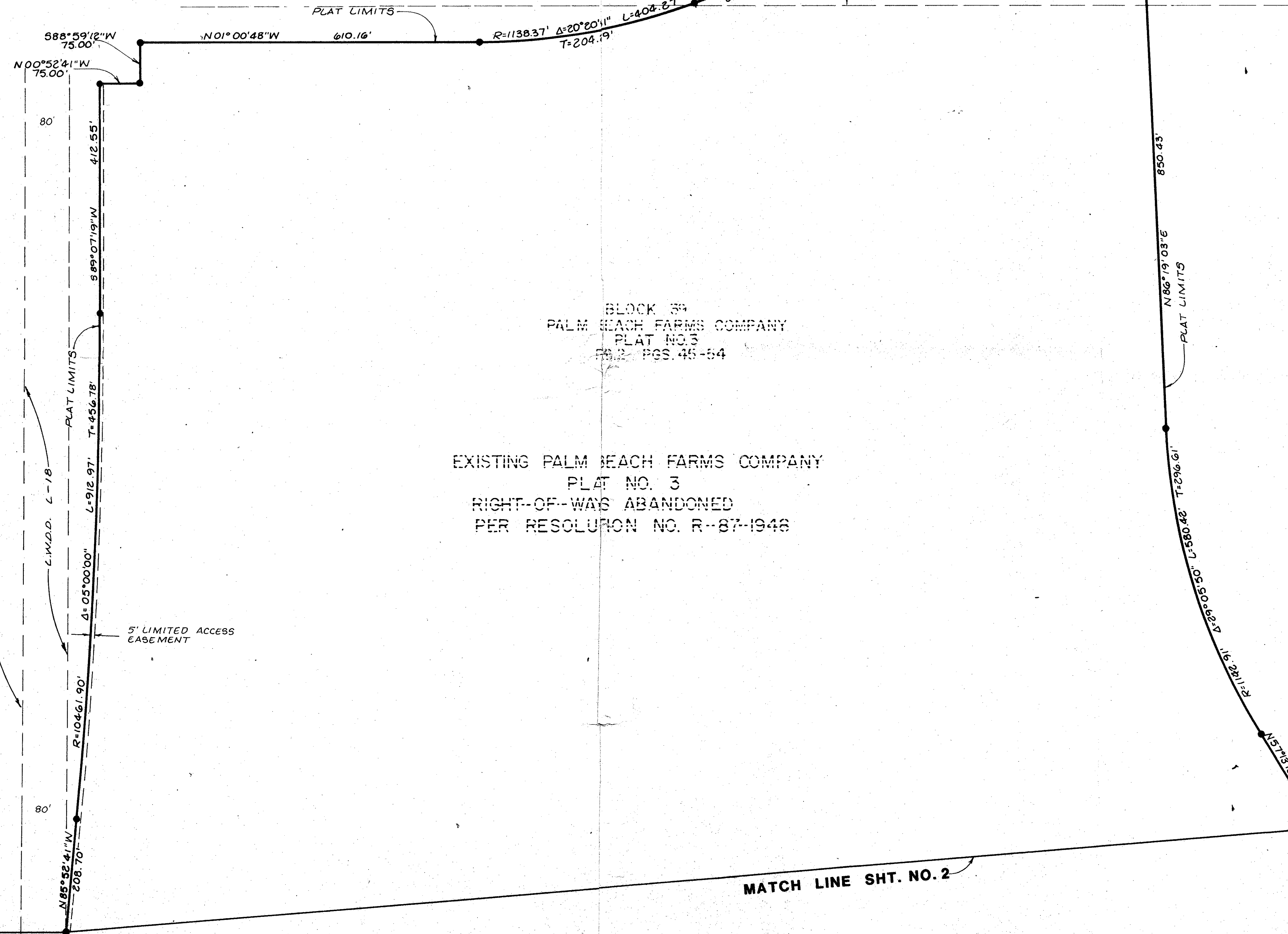
IN PART OF SECTIONS 3 AND 4, TOWNSHIP 45 SOUTH, RANGE 42 EAST
 PALM BEACH COUNTY, FLORIDA
 IN THREE SHEETS SHEET NO. 3

GEE & JENSON
 ENGINEERS - ARCHITECTS - PLANNERS, INC.
 WEST PALM BEACH, FLORIDA
 AUGUST 1987



STATE OF FLORIDA
 COUNTY OF PALM BEACH
 This plat was filed for
 record at _____ M. this _____ day
 of _____ 1987, and duly
 recorded in Plat Book No. _____
 on Page _____
 JOHN B. DUNKLE
 Clerk Circuit Court
 By: _____ D.C.

BLOCK 38
 PALM BEACH FARMS COMPANY PLAT NO. 3
 P.B.2 PGS. 45-54



PALM BEACH FARMS COMPANY
 PLAT NO. 3
 P.B.2 PGS. 45-54

HYDOLUXO ROAD
 FUTURE 110' R/W

BLOCK 39
 PALM BEACH FARMS COMPANY
 PLAT NO. 3
 P.B.2 PGS. 45-54

 EXISTING PALM BEACH FARMS COMPANY
 PLAT NO. 3
 RIGHT-OF-WAY ABANDONED
 PER RESOLUTION NO. R-87-1948

BLOCK 39
 PALM BEACH FARMS COMPANY
 PLAT NO. 3
 P.B.2 PGS. 45-54

Falls Country Club
 119 TOA
 33467
 3-4/5/82

COMPUTED *WT/LHO*
 DRAWN *PAC*
 CHECKED *LHO*
 COMMENTS

JOB NO. 86-090.1

MATCH LINE SHT. NO. 2

0510-001

FALLS COUNTRY CLUB 6/1/79